

EVOLVEO

Venus T2

www.evolveo.com

Dear customer,

Thank you for choosing the **EVOLVEO Venus T2**.

We believe it will bring you a lot of fun and satisfaction.

Important Notice: "All channels are subject to coverage and may be changed from time to time. Reception may depend on the type and condition of your existing aerial. Aerial upgrade may be required. Please confirm coverage in your area." We strongly recommend that you install an outdoors antenna when you use the DTV receiver indoors.

Note:

- 1. Terrestrial digital wireless broadcast signal may be affected by topography, objects and weather. This would cause a poor signal quality. Therefore, we strongly suggest you to use a rooftop antenna when received indoors.**
 - 2. This product is moveable but not be suitable of using in a high speed moving environment. Please check other associated products for these requirements.**
 - 3. When you use the function of pre-recording, real time recording, or time shifting, please make sure you have enough hard disk space to save huge recording data.**
 - 4. In order to operate properly, please follow the user manual and suggestive setup. Improper operations may cause the system unstable or crash. Before you remove hard disk devices, please check other related application has been closed.**
- We reserves the right to add or delete the application and its functions; all new release drivers and application will be mentioned in our website. We are not responsible for fürther notice**

1.1 Introduction

- Decoder setting
- Recorded TV location
- Schedule Recording
- Channel setting
- Menu Description(right click mouse)
- HiDTV description
- Video Recording
- Recorded file playback
- Snapshot
- Preview
- Time-shifting function
- EPG
- Video Windows description
- PIP

1.2 System requirements

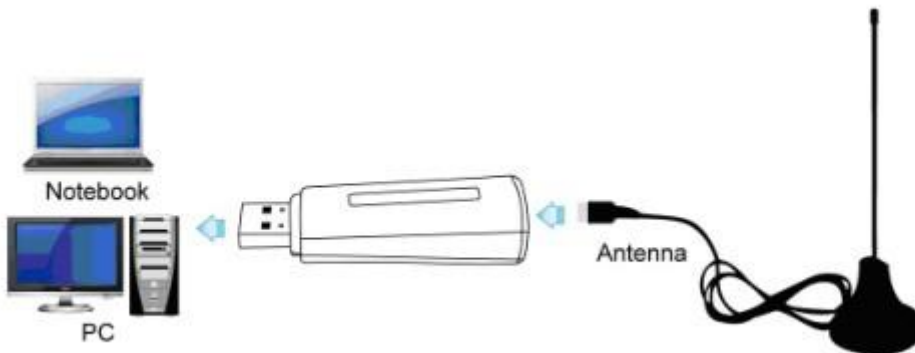
Windows: Microsoft Windows 7/8/10, 4GB RAM

Minimum processor: Minimum processor: Quad core i5 7400 3.0GHz or faster

Note: If your PC is not fast enough, you might see jerky live TV video, but your TV recordings will be fine.

Sound and graphics with support for DirectX 9 or higher

2.1 Hardware Connection



Chapter 2 How to install driver and software

Windows Driver and Software download link:

<https://www.evolveo.com/ftp/dvb-t2/windows-usb-pc-tuner/Venus-T2>

3.1 Driver Installation:

Step1: OS will remind a new hardware-- "**New Hardware Device**" was found. Please choose "**Cancel**"

Step2: Open the windows driver file which you downloaded from website, and click setup.exe to install driver

Step3: Click "**Next**" to continue installation

Step4: Click **Install** to begin the installation.

Step5: Click "**Finish**" to completely install the Driver Software.

3.2 Software installation

Step6: Click "**HiDTV Install**",

Step7: Installation of HiDTV, Choose setup language

Step8: Click **"Next"** to continue installation

Step9: If you want to change the destination folder, please click **"Browse"** and click **"next"** (Recommended is better)

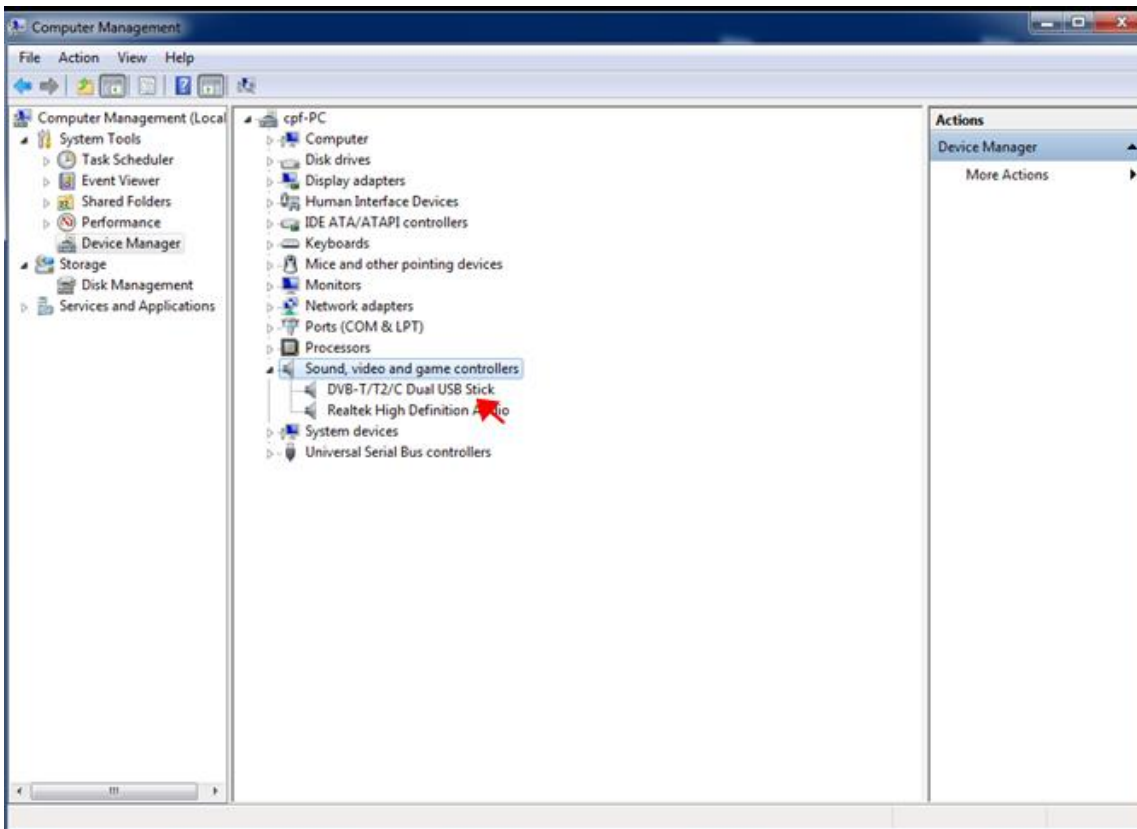
Step10: Please click **"Next"**

Step11: Click **"Finish"**, the Hidtv software is installed on your computer.

Step12: You will see that HiDTV application icons will appear on your desktop.



Step13: When its finished, please check on Control panel, select **"System"**—**"System properties"**—**"Device Manager"**, you can see three devices which new driver is installed.



Step14: In case you have defect in picture of ČT program it is necessary to install latest LAV Video Decoder. You can download it here:

<https://www.evolveo.com/ftp/dvb-t2/windows-usb-pc-tuner/Venus-T2>

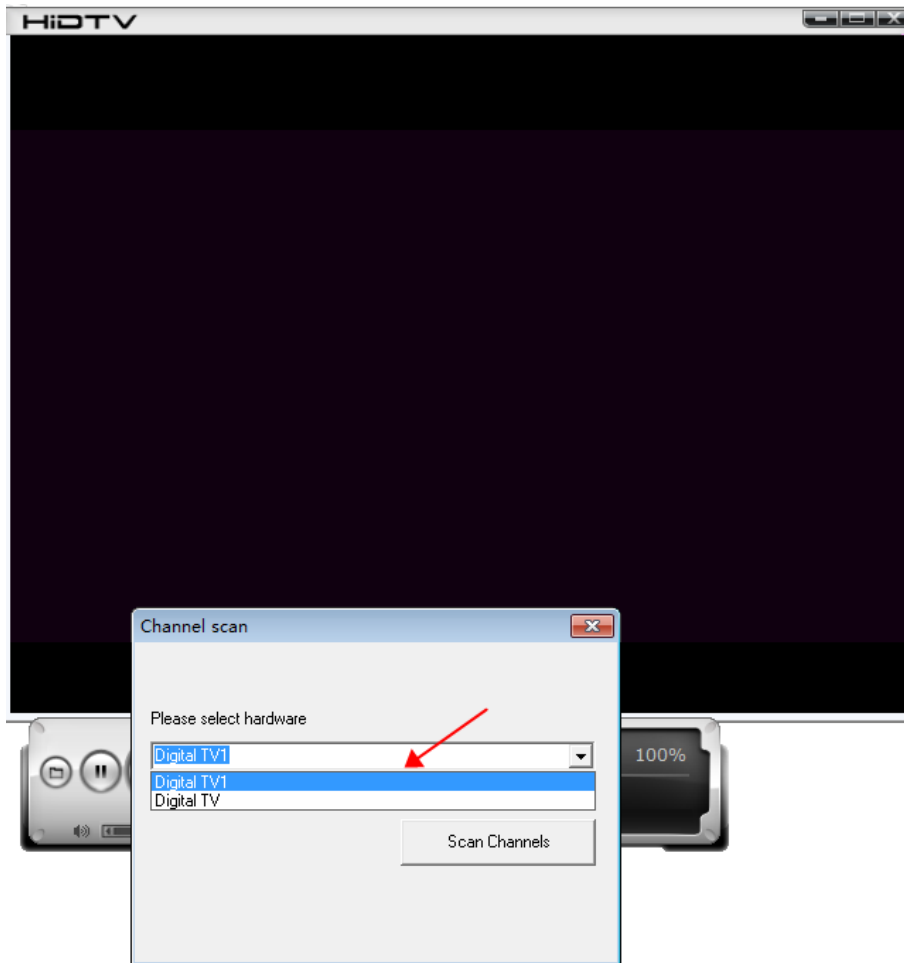
HiDTV user interface

Welcome to HiDTV. A most powerful multimedia application that allows you to access and work with Digital TV, recorded TV Programs, Radio from your PC and Laptop. It supports multi channels preview and recording at same time.

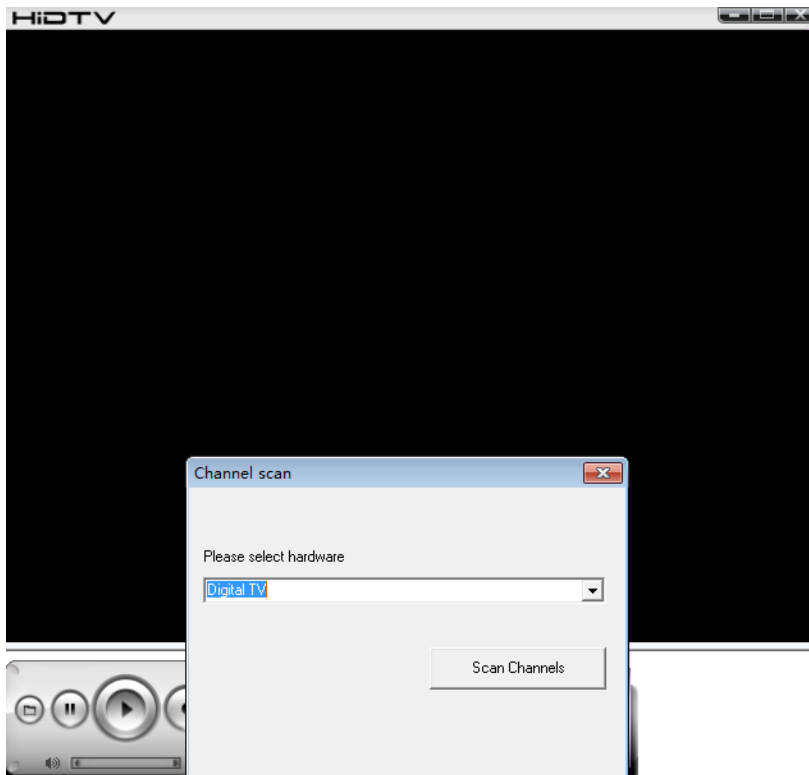


1	Minimize window	1	Signal strength display window
2	Full screen/window switch	1	Setting: Record file format setting.
		1	Hardware setting Recorded file location setting. Schedule Recording setting
3	Exit HiDTV software	1	EPG: open HiDTV EPG window
		2	
4	Playback (time-shifting,) Recorded file playback	1	Available channel list
		3	
5	Video: record the current playing audio and video to the special image files	1	Volume adjustment
		4	
6	Stop: stop the current video program Stop the current replay video files Stop auto scan channels	1	Mute:
		5	
7	Channel edit: Scan channel automatically rename the current channel, add favorite channel	1	Time-shifting and pause of playback:
		6	
8	Current input source or channel name display	1	Recorded file playback
		7	
9	Hardware description		

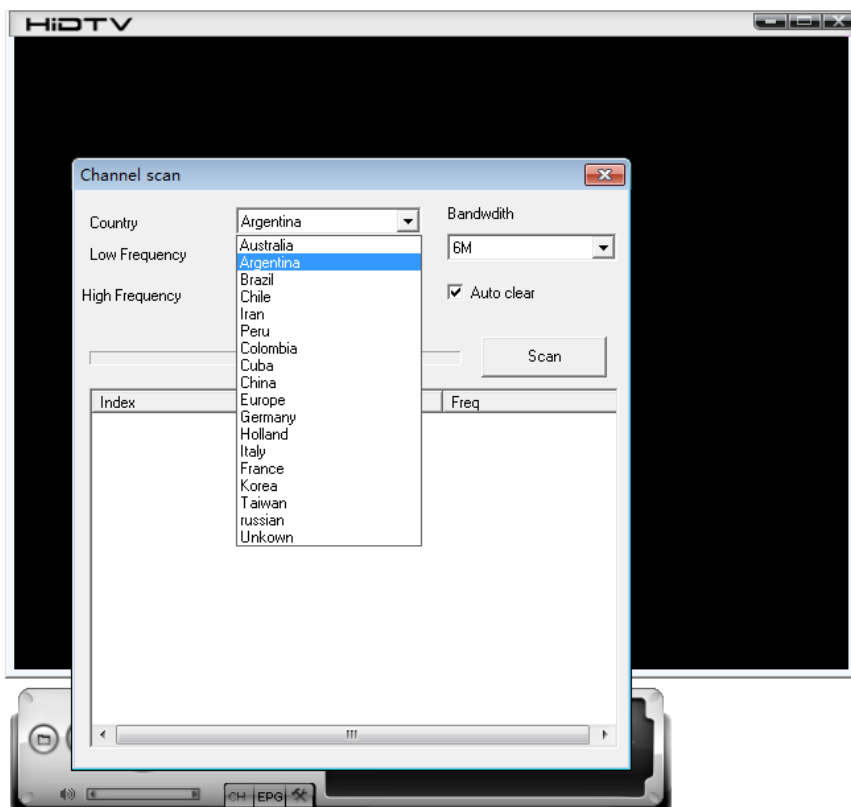
1. Please double click HIDTV.exe software, then click on the menu, as we know the device has dual tuner, you can choose one of tuner as following image showed.



2. Click " scan channels" to scanning channel



3. Select country and bandwidth, then, click "Scan" to scanning channels.

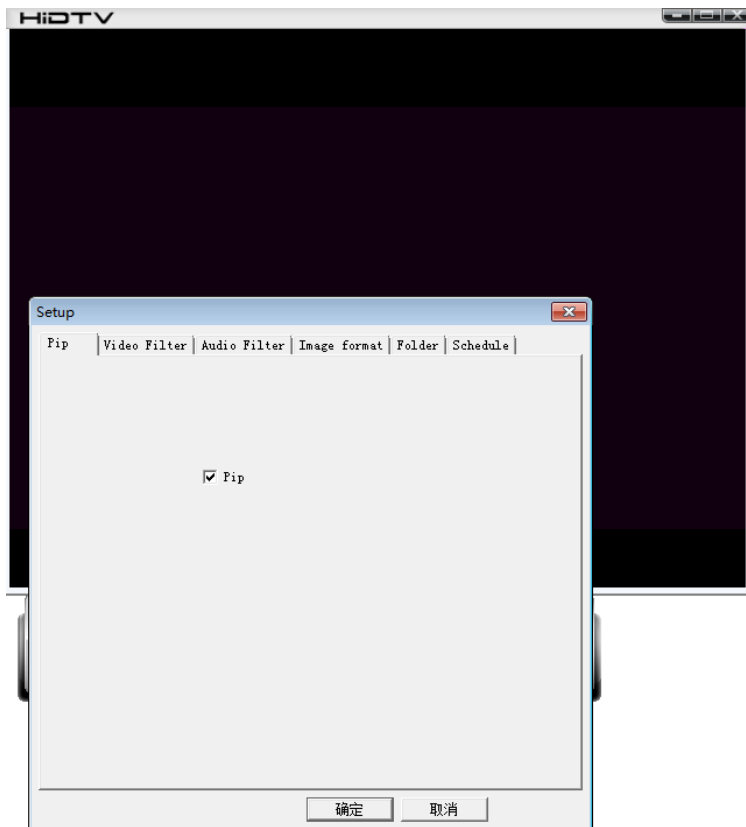


4. Choose to stop and play after the channels been scanned.



5. It can be realized that you can watch TV channels while you do recording of different channel.

6. Choose "Setup" to select "PIP"



7. Right-click on the screen to select Digital TV and Digital TV1

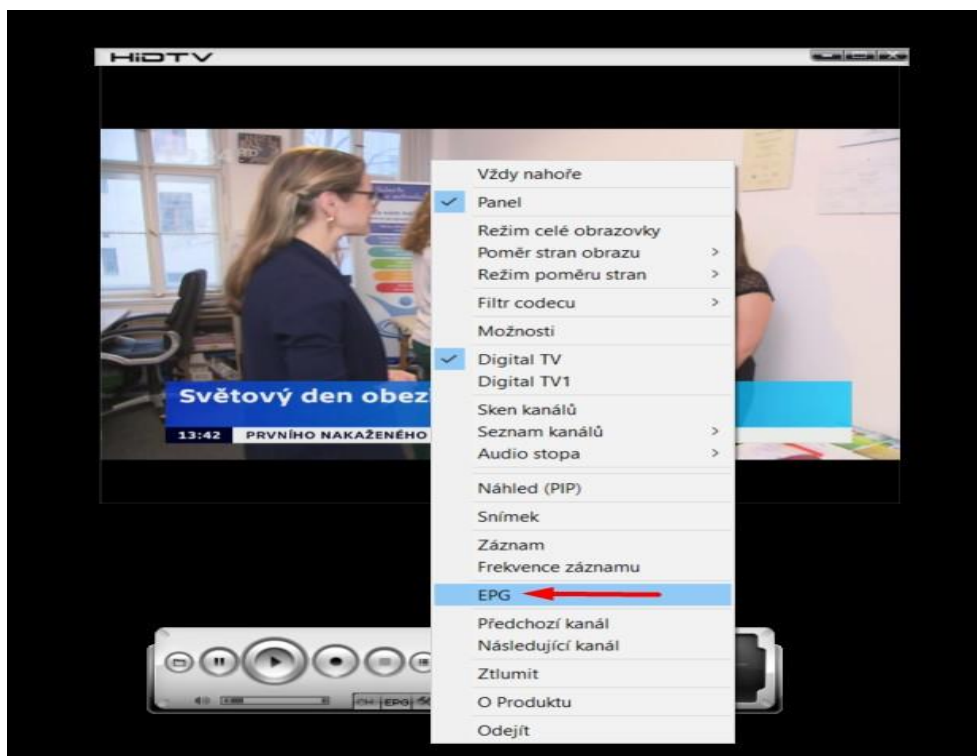


8. Select 1. tuner to do record.



EPG

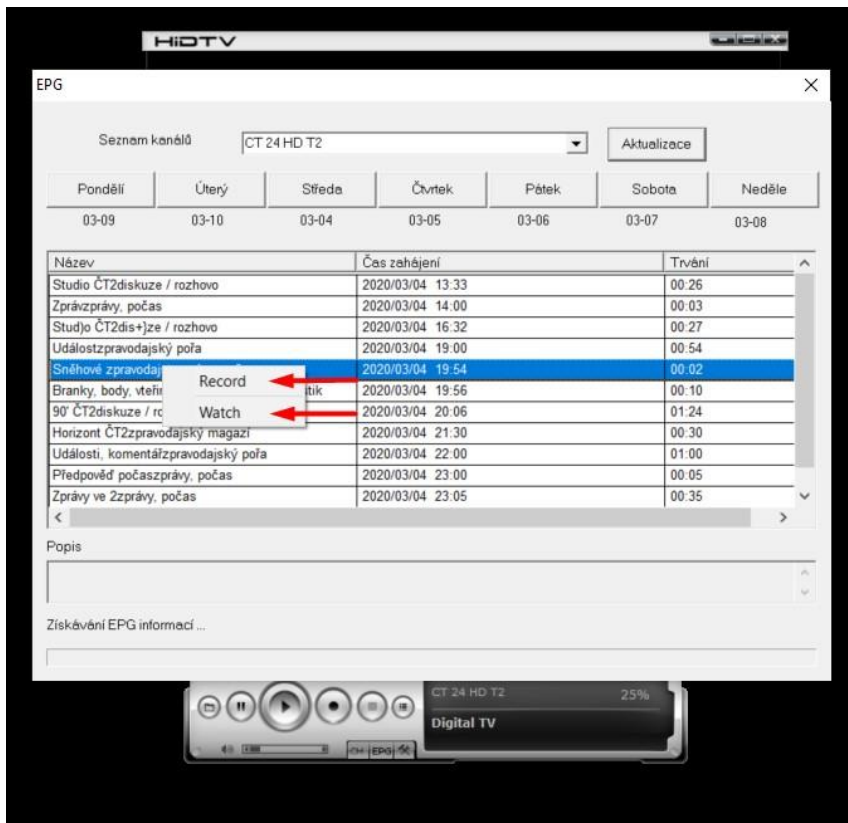
1. Right click on screen select EPG



2. If list is blank, click on refresh button



3. On selected program you can choose if You would like Record this program or Watch in future (HiDTV application must be active in this time)



Frequency Ask Question (FAQ)

1. Can not lock any program channel when auto scan.

1. Please check if there is DVBT2/T broad casting program in your area;
2. Please check if your signal condition is too weak, try to move the antenna around and re-scan again, it is better to move the antenna near the window
3. Please check you connect the antenna and tightly
4. Please check you select right country in the HidTV software scan function page.
5. Please try to use an outdoor antenna and scan once more.

2. I do find some channels,, but this time I get fewer channels than last time

1. Maybe you moved antenna's position or angle, try to find the better position and keep the antenna vertical
2. The weather also can also affect your receiving signal quality, if the weather is bad today, that is the reason
3. In some new start DVBT2/T broadcasting area, the provider of DVBT2/T broadcasting, may change their broadcasting power from day to day, try to find a best power strength.

3. When I watch program, Screen blacked out when playing or freezes on first picture.

Unfortunately, you are in a weak signal condition. You can see that from the Yellow light on the top of DVB-T2/T TV STICK. The reason is same as question 2.

4. Video playing but Audio failed

Please check the sound card or the volume setting.

5. Watching TV some time freeze or slow, also audio stroke

1. Please check your PC is not Pentium 3 or 2, DVB-T2/T TV STICK need a high CPU to decoding DVBT stream
2. Please check you VGA driver is properly installed and updated
3. Please don't run another high CPU loading software such as game and CAD.

The warranty DOESN'T APPLY to:

- using the device for other purposes than it was designed to
- installation of another firmware then the one that was installed as the original from the factory or that is to be downloaded at <ftp://ftp.evolveo.com>
- mechanical damage of caused by inappropriate using
- damage caused by the natural elements as fire, water, static electricity, overvoltage and so on
- damage caused by unauthorized repair
- damage of the guarantee seal or unreadable serial number of the device



Disposal: The symbol of crossed out container on the product, in the literature or on the wrapping means that in the European Union all the electric and electronic products, batteries

and accumulators must be placed into the separate salvage after finishing their lifetime. Do not throw these products into the unsorted municipal waste



DECLARATION OF CONFORMITY

Hereby, the company Abacus Electric, s.r.o. declares that the EVOLVEO Venus T2 is in compliance with the requirements of the standards and regulations, relevant for the given type of device.

Find the complete text of Declaration of Conformity at <ftp://ftp.evolveo.com/ce>

Dovozce / Dovožca / Importer / Importőr

Abacus Electric, s.r.o.

Planá 2, 370 01, Czech Republic

Výrobce / Výrobca / Manufacturer / Gyártó

Naxya Limited

No.5, 17/F, Strand 50, 50 Bonham Strand, Sheung Wan, Hong Kong

Made in China

Copyright © Abacus Electric, s.r.o.

www.evolveo.com

www.facebook.com/EvolveoCZ

All rights reserved.

Design and specification may be changed without prior notice.